

IMMERSED

13 January - 21 February 2020



TANDEM PRESS APEX GALLERY

Tandem Press Apex Gallery is pleased to present *Immersed*, an exhibition team curated by the Tandem Press staff, the group of people that are daily immersed in the Tandem Press inventory.

This exhibition features prints created by Suzanne Caporael, Squeak Carnwath, Robert Cottingham, Michelle Grabner, Ikeda Manabu, Judy Pfaff, Dan Rizzie, Alison Saar, T.L. Solien, and Mickalene Thomas.



Robert Cottingham

CORONA, 2015

Woodcut, chine collé

Edition of 40

38 1/2 x 38 1/2 inches



Judy Pfaff

Untitled #3, 2008

Etching, relief, archival inkjet, hole punching

Edition of 40

18 1/2 x 23 inches framed

Judy Pfaff
Bosphorous, 2010
Photogravure, relief
Edition of 30
13 3/4 x 55 3/4 inches





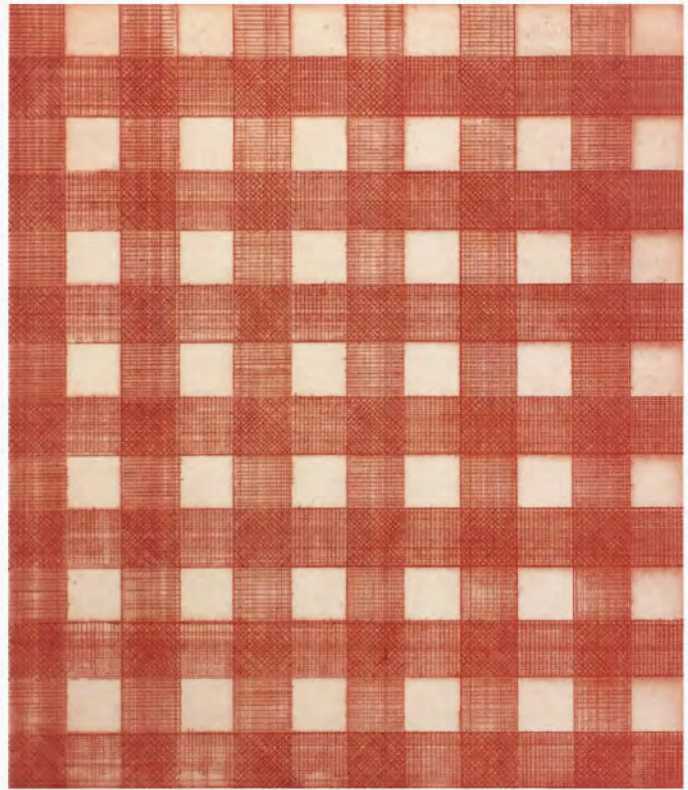
Ikeda Manabu

Untitled, 2014

Etching

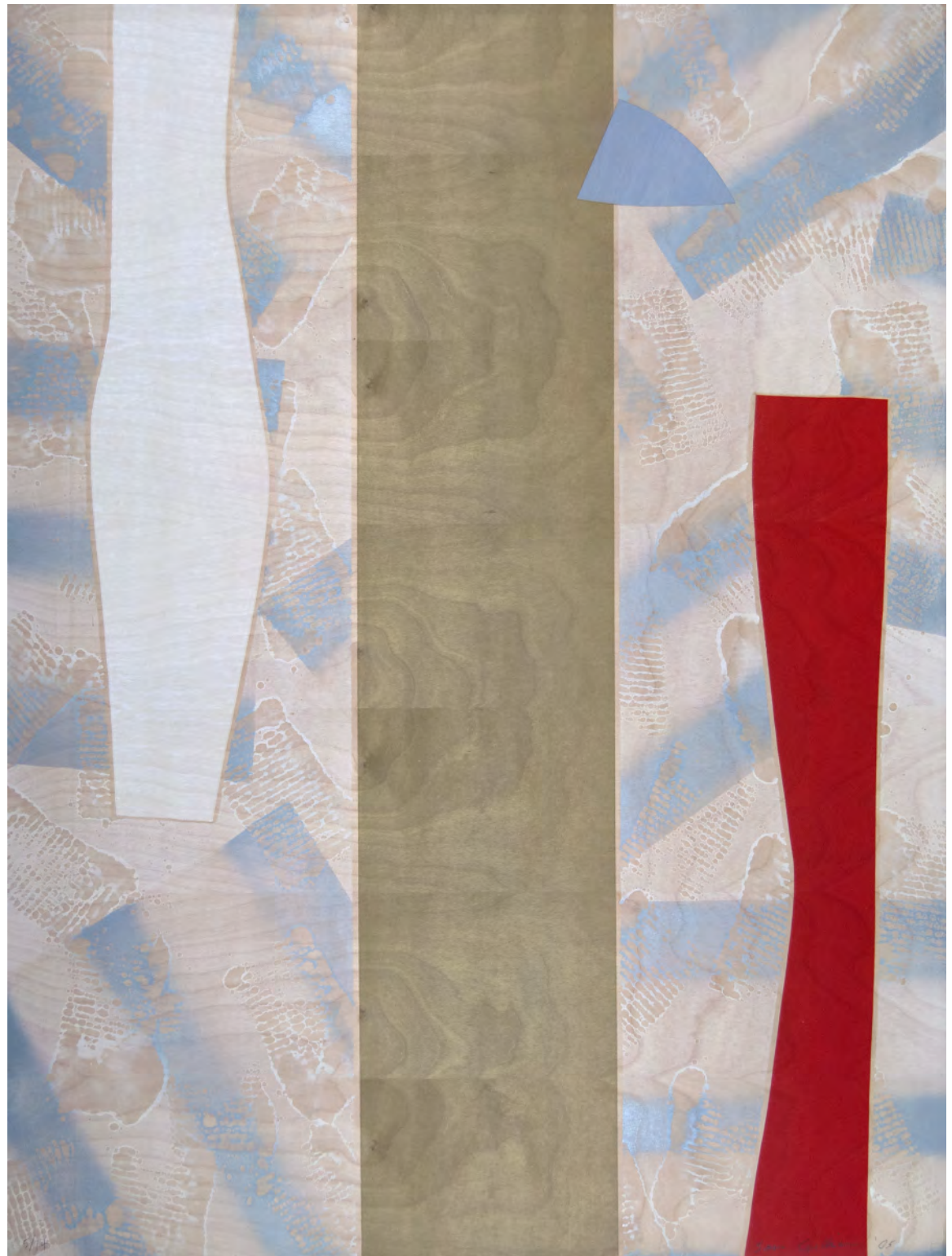
Edition of 30

16 3/8 x 18 7/8 inches



Michelle Grabner
Warm Red Gingham, 2015
Etching
Edition of 24
20 1/2 x 18 inches

Sam Gilliam
Castle Banner 1, 2004
Relief and collage on wood veneer
Edition of 14
48 1/2 x 36 1/2 inches





T.L. Solien

Fireman's Helmets, 2012

Lithography, collage, etching, colored pencil

Edition of 30

21 x 25 inches



T.L. Solien

Lander, 2012

Lithography, intaglio, relief, collage

Edition of 30

21 x 24 5/8 inches



Dan Rizzie

24 Gems for John Torreano, 2015

Lithography, relief, collage, chine collé, hand painting

Edition of 30

27 x 22 inches

Suzanne Caporael

Franchise, 2010

Relief, chine collé

Edition of 25

42 x 33 3/4 inches





Suzanne Caporael

Monpelier, Ohio, 2013

Etching

Edition of 30

29 3/4 x 22 1/2 inches

R.T.P.

CAPORAE 2012



Mickalene Thomas

*Interior: Zebra with Two Chairs and
Funky Fur, 2014*

Relief, intaglio, lithography, archival inkjet, collage,
wood veneer, handmade paper, enamel paint,
gold leaf, colored pencil

Edition of 24
43 x 53 inches



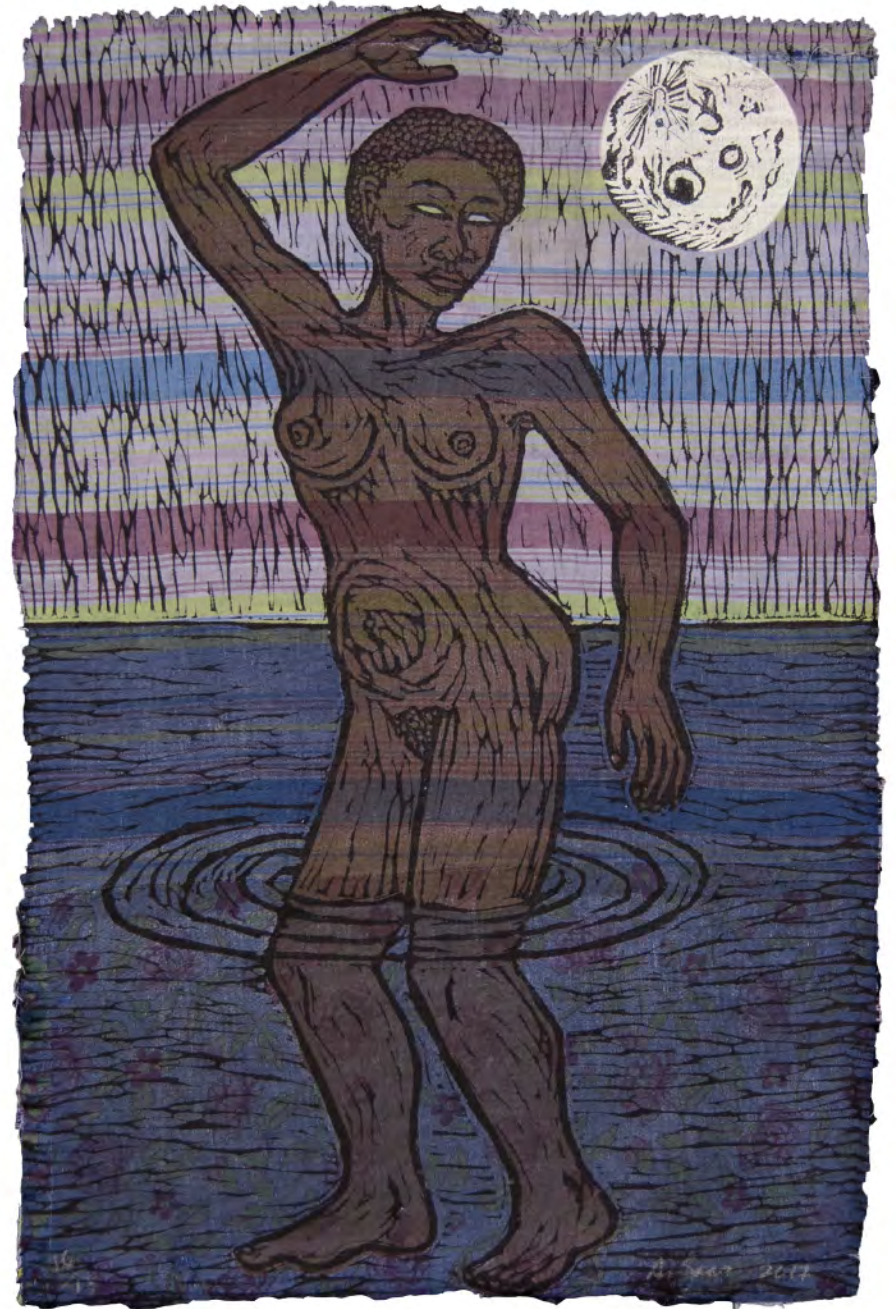
Mickalene Thomas

Left Behind 2 Again, 2014

Relief, intaglio, lithography, archival inkjet,
collage, enamel paint

Edition of 24

43 x 64 1/2 inches



Alison Saar

Black Bottom Stomp [16/18], 2017

Woodcut and linoleum cut on indigo dyed vintage quilt pieces

Varied edition of 18

18 x 11 3/4 inches



Alison Saar

Haint Blue, 2016

Woodcut on Chiri with cotton muslin overlay and shellac

Varied edition of 12

24 3/4 x 14 1/2 inches



Alison Saar

Redbone Blues [4/21], 2017

Intaglio on found vintage handkerchiefs

Varied edition of 21

17 x 16 inches